



# Prospectus



**Believe in yourself**  
**Anything is possible**  
**Don't just fly - soar!**

# Wilmington Academy is part of Leigh Academies Trust



**LEIGH**  
Academies Trust

Leigh Academies Trust is one of the country's largest and most established multi-academy trusts operating across Kent, Medway and South East London. It contains primary, secondary and special academies and is highly inclusive and successful. Our mission is to deliver "education for a better world" by ensuring that young people in our academies have an excellent start in life regardless of their background or ability.

## Our Values

We care -

about our pupils and their families through our human scale approach to education, our staff and their well-being and the world around us, driven by our high ideals and strong moral values.

We have boundless ambition -

to achieve excellence for all and create confident young adults with high levels of resilience and integrity.

We work together -

as one team because we are greater than the sum of our parts. We foster an enterprising culture through global collaboration with partners in business and education.

We keep getting better -

using our 'can-do' attitude towards continuous improvement and innovation.



For admission enquiries telephone: 01322 272111  
or email: [admin@wilmingtonacademy.org.uk](mailto:admin@wilmingtonacademy.org.uk)

'Wilmington Academy is an exceptional school providing a world-class education for its pupils and sixth formers.'

Ofsted, May 2023



# Contents

Use our contents page to navigate your way through our prospectus

## Principal's Welcome

A message from Michael Gore

## Our Vision and Values

About us

## A Personalised Approach

Our students feel valued

## A Strong Sense of Community

Our small school, human-scale approach

## Our 3 Colleges

Minerva | Apollo | Jupiter

## Our Curriculum

What we offer

## Teaching and Learning

Following an IB philosophy

## Post 16

An inclusive learning community

## Careers Education and Work-related Learning

Preparing our students for their future

## Further Information

Visit us

# Welcome



‘School leaders are highly ambitious for pupils’ education. The principal is inspiring, passionate and determined. He is well supported by senior leaders, who are committed to improving the quality of teaching and learning.’

Ofsted, May 2023

Believe in yourself  
Anything is possible  
Don't just fly - soar!

I am delighted to welcome you to Wilmington Academy. We have created a highly successful academy where students from a wide variety of backgrounds and starting points can flourish and succeed. Our IB focused curriculum is carefully designed to meet the needs and aspirations of all our young people and we have an extensive programme of enrichment and support that provides extra opportunities for personal development and growth.

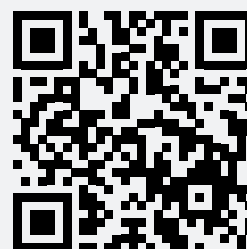
Recognised as one of the leading IB World Schools in the UK, we deliver a highly successful IBMYP & CP which provides our students with a truly world class education.

Academic excellence, hard work and good manners are expected of all our students. International-mindedness, cultural understanding and an appreciation of the benefits diversity can bring are at the heart of what we believe.

We work closely with Leigh Academies Trust, external partners and organisations to ensure we provide the educational experience our students need to succeed in an increasingly complex and ever-changing world.

Michael Gore  
Principal

[Click here](#) or  
scan the QR code  
to view our  
Outstanding  
Ofsted report







## our VISION

Wilmington Academy is part of Leigh Academies Trust. We believe in the power of the Trust small schools within a school to transform lives and shape communities. We also believe that collaboration within the Trust and beyond, at national and international level, will help us to achieve the best possible outcomes for our students.

**Believe in yourself**  
**Anything is possible**  
**Don't just fly - soar!**

## our VALUES

The Academy is an outstanding, inclusive learning community where everyone feels safe and valued. We aim to develop inquiring, knowledgeable and caring young people who help to create a better more peaceful world through intercultural understanding and respect, recognising that other people with their differences can also be right.

‘Leaders and staff are highly committed to pupils’ personal development, welfare and well-being. The personal development curriculum is delivered creatively and appropriately. The provision is effective in supporting pupils to become responsible and respectful world citizens.’

Ofsted, May 2023



## A Personalised Approach

Our priority is that students feel valued, enjoy their learning and achieve their full potential. We have high expectations of our students. We set them challenging targets for academic and personal achievement.

Progress is closely monitored and communicated on a regular basis via modular reports and consultation evenings. Support is readily available whenever it is needed to ensure that every student has the best chance of success.

At Wilmington Academy we aim to embody the vision of our three colleges: 'Believe in yourself; anything is possible; don't just fly – soar!' and this mantra is also followed by the SEND department, and through the work of all of our staff.

We aim to offer all students, regardless of ability, need or background a broad and balanced curriculum that allows them to thrive academically, socially and emotionally. Wilmington Academy is committed to ensuring all SEND students maximise their full potential and participate fully in academy life. We wish for all of our SEND students to be happy at school and to move onto appropriate and fulfilling pathways in Post-16.

'Pupils are safe and happy. Their behaviour is exceptional. They are always thoughtful, polite and respectful. Pupils accept and understand the rules.'

Ofsted, May 2023

## A Strong Sense of Community

We believe in human-scale education. Our small school structure and pastoral systems allow staff and students to build effective relationships and give everyone a sense of belonging.

Discipline is firm and the development of moral values underpins the ethos of the academy. We believe in team work and strive to develop empathy, tolerance, respect and trust. We encourage our students to aim high and celebrate achievement whenever possible.

'Assessment is regular and used to check the progression of pupils continuously to identify where further support is needed.'

Ofsted, May 2023

# Our 3 Colleges



M I N E R V A

Believe in yourself



A P O L L O

Anything is possible



J U P I T E R


Don't just fly - soar!

Wilmington Academy comprises of three colleges, Minerva, Apollo and Jupiter designed around community, relationships, respect and high aspirations. Whilst the vision and values are the same, each college has its own leadership, student services team and administration.

The human-scale, modular culture and personalised approach to learning mean that no student gets left behind. We are a reflective, outward-facing community constantly reviewing our successes and adapting to bring about improvements.

Believe in yourself  
Anything is possible  
Don't just fly - soar!





'The curriculum is carefully considered, meticulously sequenced and securely embedded. It is hierarchical across all years, including the sixth form. It is extremely ambitious and carefully matched to the national curriculum, while fully meeting the demanding requirements of the IB.'

Ofsted, May 2023

## Our Curriculum

### Teaching and Learning in Context

Students learn best when their learning experiences have context and are connected to their lives and the world that they have experienced. Using global contexts, students explore human identity, global challenges and what it means to be internationally-minded.

### Conceptual Understanding

Concepts are big ideas that have relevance within specific disciplines and across subject areas. Students use concepts as a vehicle to inquire into issues and ideas of personal, local and global significance and examine knowledge holistically.

### Approaches to Learning (ATL)

A unifying thread throughout all MYP subject groups, approaches to learning provide the foundation for independent learning and encourage the application of their knowledge and skills in unfamiliar contexts. Developing and applying these skills help students learn how to learn. The ATL that are developed are;

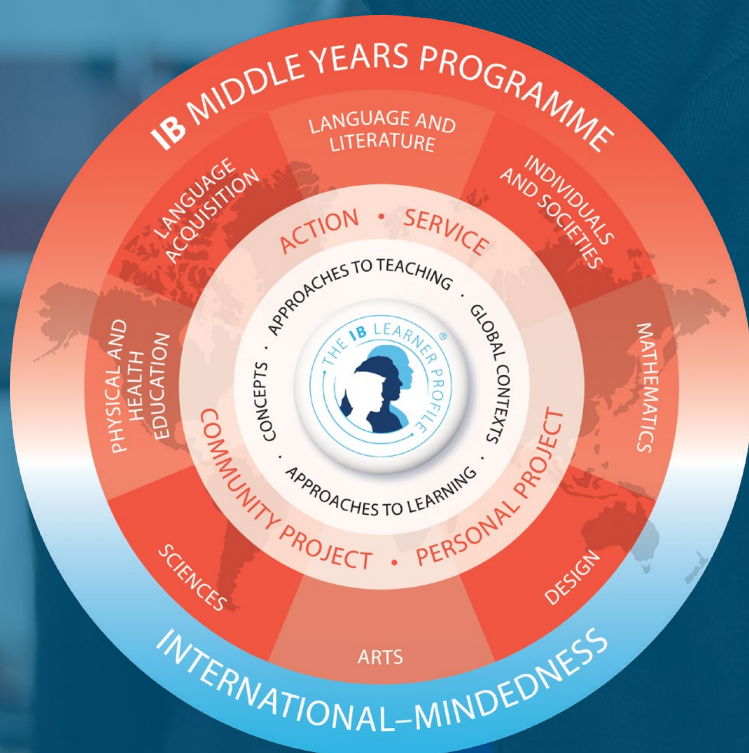
Communication, Social (Collaboration), Self-Management, Research and Thinking.



# Teaching and Learning

At Wilmington Academy we are authorised to facilitate the International Baccalaureate Middle Years Programme (MYP) in Key Stage 3 and the Careers Programme (CP) in Post 16 and as such the Teaching and Learning at Wilmington Academy follows the IB philosophy of:

- encouraging international-mindedness in our students, starting with a foundation in their own language and culture;
- promoting a positive attitude to learning by challenging our students to solve problems, show creativity and resourcefulness, and participate actively in our community;
- providing tasks and activities that allow our students to see the connections among the subjects themselves, and between the subjects and real issues;
- supporting the development of communication skills to encourage enquiry, understanding and language acquisition, and to allow student reflection and expression;
- emphasising, through the learner profile, the development of the whole student – physically, intellectually, emotionally and ethically.



‘Teachers have expert subject knowledge and deliver lessons with clarity and enthusiasm. Pupils benefit from the support and encouragement of their teachers. Literacy skills are developed well, and subject-specific language is vigorously supported. Reading has a high priority across the school. There is an extensive range of provision to support pupils to read widely and often.’

Ofsted, May 2023



© International Baccalaureate Organisation 2018





Post 16 students benefit from the extensive range of academic and vocational courses that exist within the secondary academies at Leigh Academies Trust.

Enrichment opportunities including volunteering, travelling in the UK and abroad and cross Trust collaboration allow our students to develop leadership and other skills prized by universities and employers.

The Post 16 provision at Wilmington Academy is an inclusive learning community where everyone feels safe and valued. We aim to develop inquiring, knowledgeable, and caring young people who help to create a better more peaceful world through intercultural understanding and respect, recognising that other people with their differences can also be right.

We believe in:

- A personalised approach to learning
- A strong sense of community
- Enquiry rather than lecture
- Opportunities that develop you as a life-long learner, and rounded young person
- Tailored and impartial careers information, advice and guidance

We have boundless ambition for our students offering a suite of qualifications that provide a strong platform for future endeavours.

The Post 16 outcomes are truly world class with subjects outperforming world averages.

We take pride in our consistently strong trend of results enabling our students to be successful for their next steps.

## Careers Education and Work-related Learning

We are proud of our comprehensive career education programme which incorporates work-related learning, business mentoring and work experience.

Wilmington Academy students are prepared for the world of work through education, careers education and work-related learning. We work with the students to improve self-awareness and challenge their ideas.

As part of Leigh Academies Trust all of the academies are committed to the Investor in Careers Award and Wilmington Academy is proud to have achieved the full award. This award demonstrates the comprehensive Careers Education Information Advice and Guidance.

(CEIAG) that the students receive throughout their journey at Wilmington Academy.

‘Leaders have designed systems and structures that are highly effective in supporting sixth form students.’

Ofsted, May 2023



# Further INFORMATION

Please visit our website:

[Wilmington Academy](#)

## Year 6 Transition

Moving from Primary School to Secondary School is an exciting time in a young person's life. Please visit our website for more information.

[Visit our Year 6 Transition Google Site](#)

## Post 16 Transition

Your future starts here!

[Visit our Post 16 Transition Google Site](#)

## Uniform

Please visit us to see more information.

[Visit our website](#)

## Student Support and Wellbeing

Please visit us to see more information.

[Student Welfare](#)

[Wellbeing Service](#)





Common Lane  
Wilmington  
Dartford, Kent DA2 7DR

01322 272111  
admin@wilmingtonacademy.org.uk  
wilmingtonacademy.org.uk

Believe in yourself  
Anything is possible  
Don't just fly - soar!



**LEIGH**  
Academies Trust

Education for a better world

Chief Executive: Simon Beamish BA (Hons) MSc PGCE NPQH NLE

Carnation Road, Strood, Rochester, Kent ME2 2SX  
01634 412200 | fax: 01634 412201  
info@latrust.org.uk | leighacademiestrust.org.uk

Leigh Academies Trust is a registered company (company no 2336587) and an exempt charity.